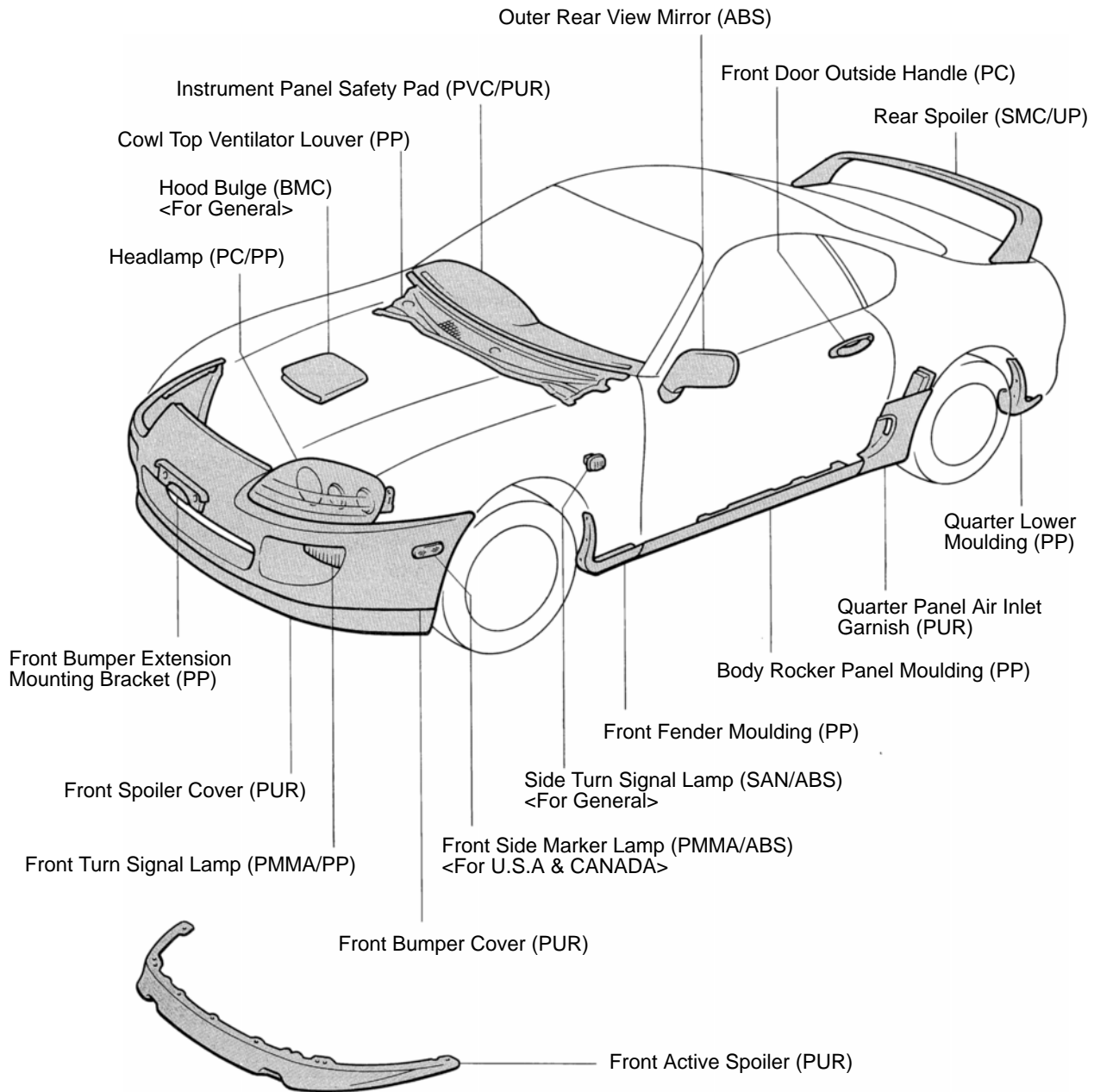
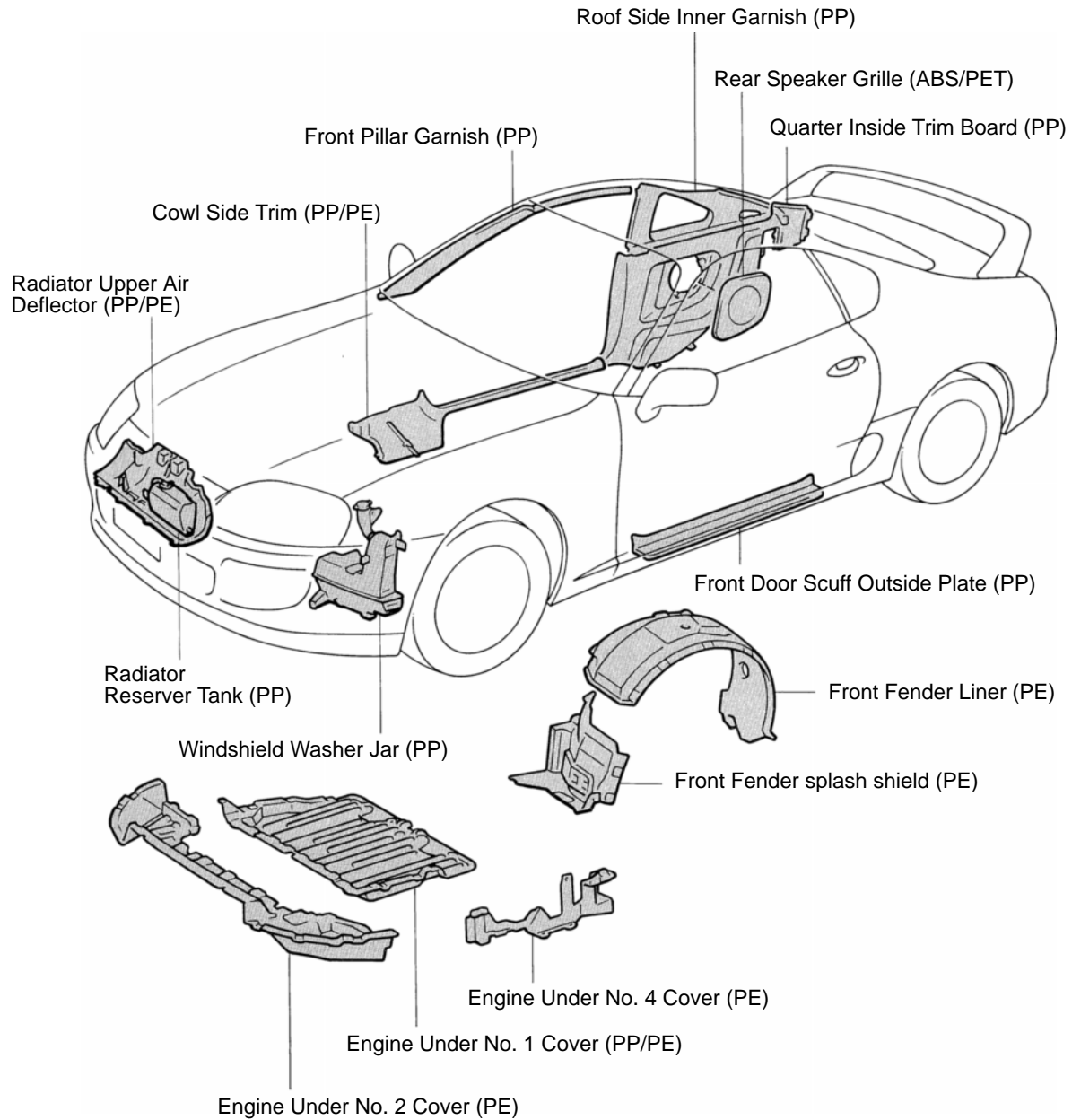


# LOCATION OF PLASTIC BODY PARTS



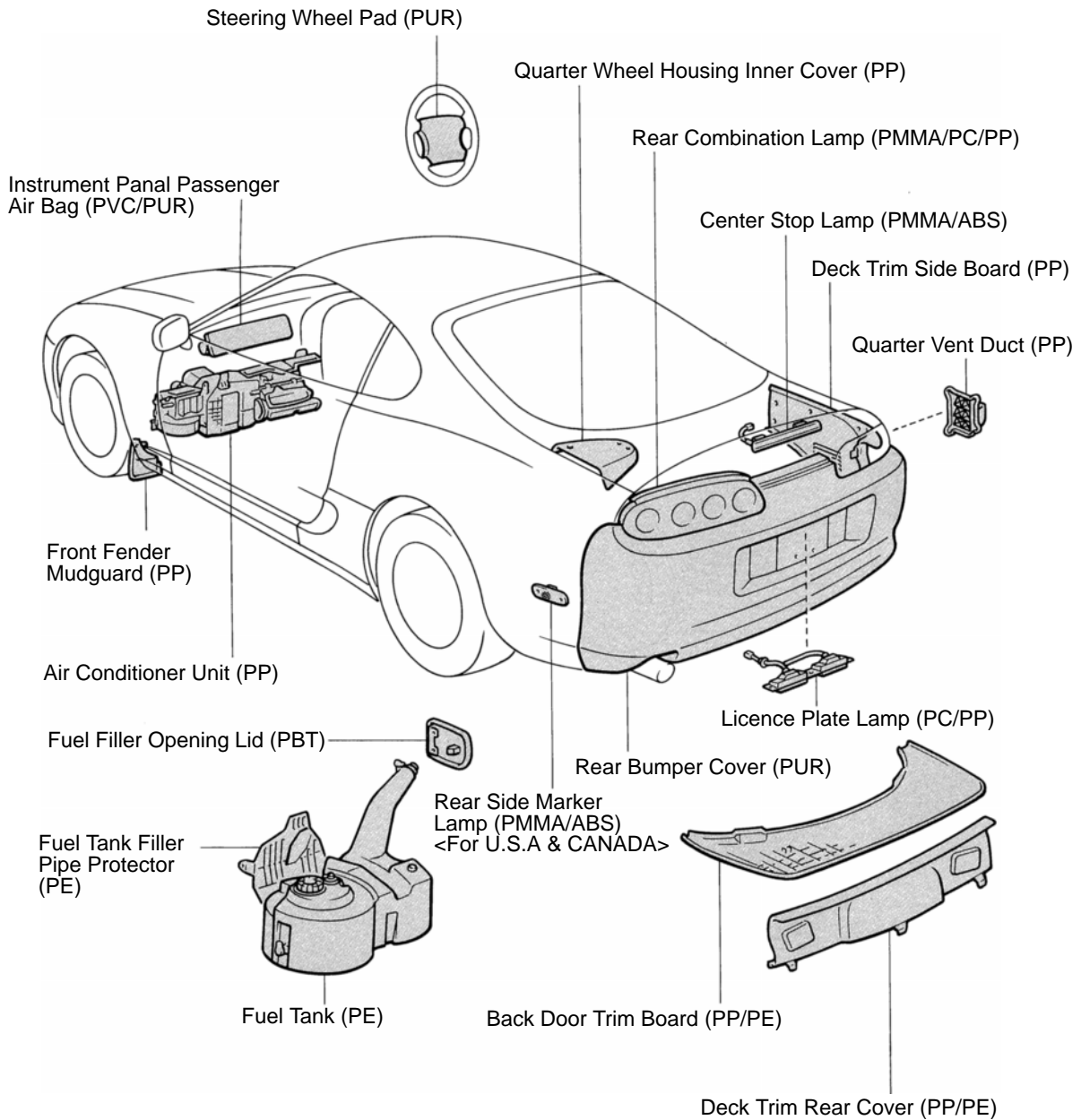
## HINT:

- Resin material differs with model.
- / Made up of 2 or more kinds of materials.



**HINT:**

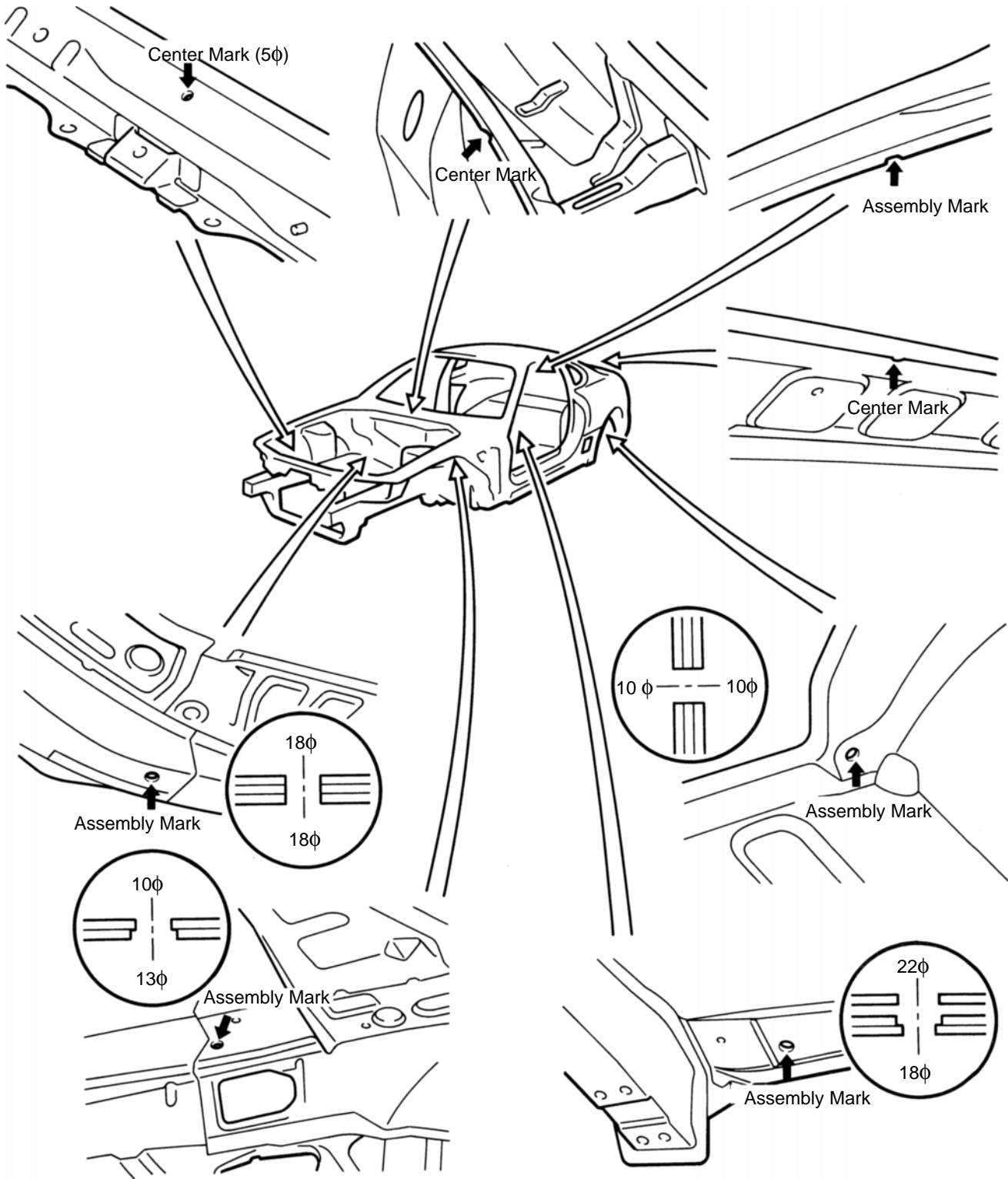
- Resin material differs with model.
- / Made up of 2 or more kinds of materials.



**HINT:**

- Resin material differs with model.
- / Made up of 2 or more kinds of materials.

# STANDARD BODY MARKS



mm	in.
5	0.20
10	0.39
13	0.51
18	0.71
22	0.86