



W

K

L

I

N

D

E

SKYLINE

2500

**Born of a supercar**





## Bred for the street

Since its debut in 1957, the Skyline has continually evolved as a Grand Touring

car that has consistently delivered superlative driving performance.

The GTR, the epitomy of Skyline, has been tested to its limits on the legendary Nurburgring circuit, following an unrelenting process of development, and resulting in the car being dubbed by 'Car' magazine as the best all-round supercar in the world.

Lessons learned in the development of the GTR are today manifest in the new GT turbo. From the 'straight 6', 206kW turbocharged engine, to the multi-link suspension and Nissan's Super HICAS 4-wheel steering system, the GT turbo provides superb driving performance.

Groomed to perfection





Skyline's purposeful design is equalled only by its aggressive soul. Its engine. The 2.5 litre DOHC, 24 valve,

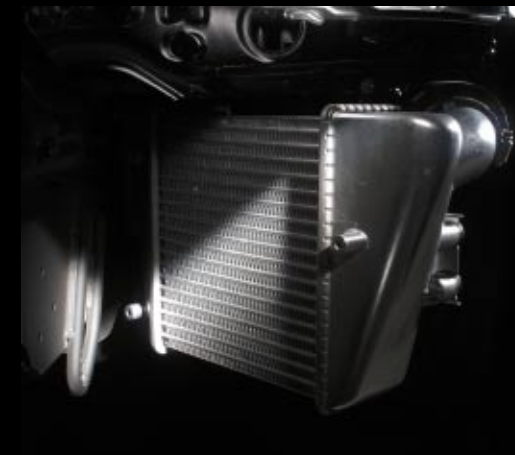
6 cylinder, turbo charged engine in the GT turbo produces 206 kW's of power and in excess of 300 Nms of

torque (363 in manual, 333 in automatic).

Coupled with Nissan's variable valve

## Primed for action

timing control system (VVTc) it delivers higher power and torque right across the rev range.

















Sporty driving demands concentration, you need information at a glance.

The GT turbo's cockpit is equipped with all you need to provide accurate and timely information on the car's performance.

Performance isn't just about engine

## Prepare for takeoff

power, it's also about the transmission of that power.

To make the most of the engine's performance, Nissan have developed a 5 speed manual transmission and an electronically controlled 4 speed automatic featuring a manual shift mode. The 'Dualmatic



M-Atx' combines the driving ease of an automatic with the direct shifting of a manual. Shifting is either by the gear lever or by the toggle controls on the steering wheel.



You don't just sit in a GT turbo, you wear it.

Monoform sports seats with heavily contoured profiles provide comfortable support under all



driving conditions. Completing the interior's sporty look are the black and silver leather bound steering wheel and the drilled alloy foot pedals.





Maximum grip from the all-round Multi-link suspension delivers ultimate responsiveness to the driver's actions keeping the tyres in



## Taking it to the limit

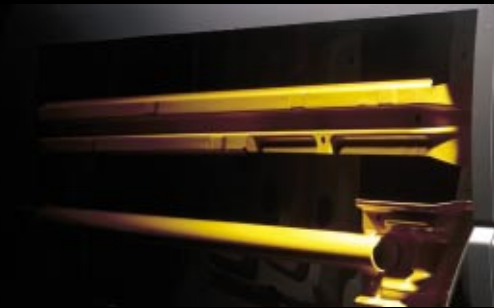


solid touch with the road. Body roll is almost non-existent while the front strut tower brace increases body rigidity, to further improve handling response.





## Going all the way



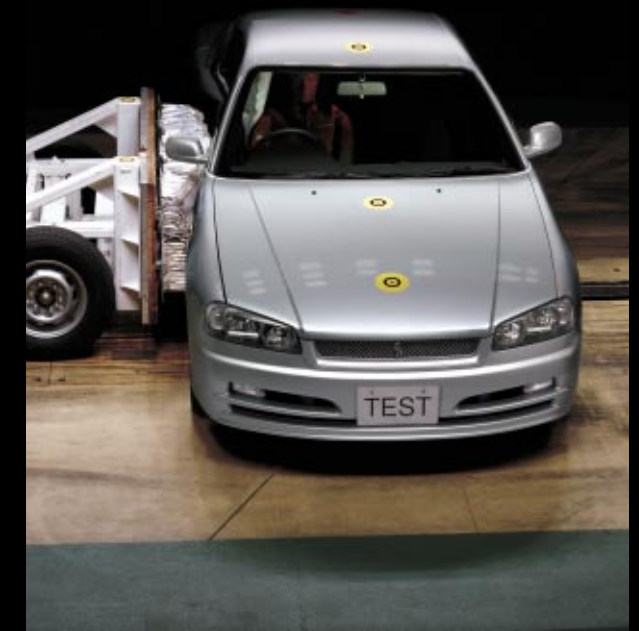
To truly enjoy a driving experience, you must be confident about the safety of you and your passengers. Nissan's Triple Safety concept gives you that peace of mind.

First there is Information Safety, where features such as Xenon and CSR Halogen headlights help the driver identify potential hazards.

Control Safety features provide the driver with the means to avoid hazards by controlling the vehicle with precision; these include ABS (Anti-lock Braking System) with Brake Assist, disc brakes, all-round Multi-link suspension and Super

HICAS 4-wheel steering.

Impact Safety features minimise injury in the event of an accident. Nissan's exclusive Zone Body construction divides the vehicle body into two separate zones; a crushable zone (front and rear) designed to absorb collision impact, and a safety restraint zone that acts as a protective shell around the vehicle occupants. Dual SRS (Supplementary Restraint System) airbags and seat belt pretensioners with load limiters provide further protection for front seat occupants.



**MECHANICAL:**

		5 Speed Manual	4 Speed Automatic
<b>Engine:</b>			
Engine - 2.5 litre DOHC, 24 valve, 6 cylinder		✓	
Turbocharger with Intercooler		✓	
Capacity	cc	2498	
Power	kW @ rpm	206 @ 6400	
Torque	Nm @ rpm	363 @ 3200	333 @ 3200
Bore and Stroke	mm	86.0 x 71.7	
Compression Ratio		9.0 : 1	
Engine Management System		Electronic Concentrated Engine Control System (ECCS)	
Sequential Multi Point Fuel Injection		✓	
Fuel Type		Premium Unleaded Petrol	
Variable Valve Timing Control (VVTC)		✓	

**Transmission:**

Manual: 5 Speed Manual		✓	
Automatic: Electronically Controlled 4 Speed Auto with Lock-up Torque Converter Dualmatic M-Atx with Controls on Shift Lever & Steering Wheel			✓
Gear Ratios: (manual / automatic)			
	1st	3.214	2.785
	2nd	1.925	1.545
	3rd	1.302	1.000
	4th	1.000	0.694
	5th	0.752	
	Reverse	3.369	2.272
	Final Drive	4.111	4.083
Rear Wheel Drive		✓	✓
Limited Slip Differential (LSD)		Helical	Viscous
Traction Control System (TCS)		✓	✓

**Suspension:**

Front:	Independent Multi-link with Stabiliser Bar
Rear:	Independent Multi-link with Stabiliser Bar
Front Strut Tower Brace	✓

**5 Speed Manual 4 Speed Automatic**

<b>Brakes:</b>			
Power Assisted Ventilated Discs Front & Rear		✓	
Alloy Calipers - 4 piston FR, 2 RR		✓	
ABS Anti-Lock Braking System		✓	
Brake Assist System		✓	

**Steering:**

Power Assisted Steering		✓	
Electric Super HICAS 4 Wheel Steering		✓	

**Wheels and Tyres:**

Alloy Wheels, 225/45ZR 17 Tyres		✓	
Spare Wheel - Spacesaver		✓	

**Weights and Capacities:**

Kerb Weight	kg	1410	1430
Fuel Tank Capacity	litres	65	

**FEATURES:**

**Exterior:**

Body Coloured Bumpers	✓	✓
Body Coloured Door Handles	✓	✓
17" Alloy Wheels	✓	✓
Rear Spoiler	✓	✓
Dual Chrome Exhaust Finishers	✓	✓

**Interior:**

Leather Covered Steering Wheel - Black & Silver	✓	✓
3 Spoke Sports Steering Wheel	✓	✓
Tilt Adjustable Steering	✓	✓
Leather Covered Shift Knob - Black & Silver	✓	✓
Leather Covered Parking Brake Lever	✓	✓
Alloy Foot Pedals	✓	✓
Sports Seats	✓	✓
Driver Seat Height Adjustment FR & RR	✓	✓
Adjustable Front Headrests	✓	✓
Day / Night Rear View Mirror	✓	✓

**Comfort/Convenience:**

	5 Speed Manual	4 Speed Automatic
Air Conditioning - Climate Control	✓	✓
Power Windows - Auto Up & Down	✓	✓
- with Safety Stop and Key-off Functions	✓	✓
Remote Central Locking	✓	✓
Security System with Immobiliser	✓	✓
Power Door Mirrors - Body Colour	✓	✓
- Power Foldaway Type	✓	✓
Driver's Footrest - Alloy	✓	✓
Variable Intermittent Front Wipers	✓	✓
Intermittent Rear Wiper	✓	✓
Rear Window Demister (with Timer)	✓	✓
Interior Courtesy Light	✓	✓
Illuminated Ignition Key Cylinder	✓	✓
Map Lights	✓	✓
Glove Box Light	✓	✓
Luggage Compartment Light	✓	✓
Visor Vanity Mirror with Lid - Passenger	✓	✓
Cup Holders	✓	✓
Centre Console with Lid	✓	✓
Front Seat Back Pockets	✓	✓
Front Door Pockets	✓	✓
Remote Fuel Lid and Boot Release	✓	✓

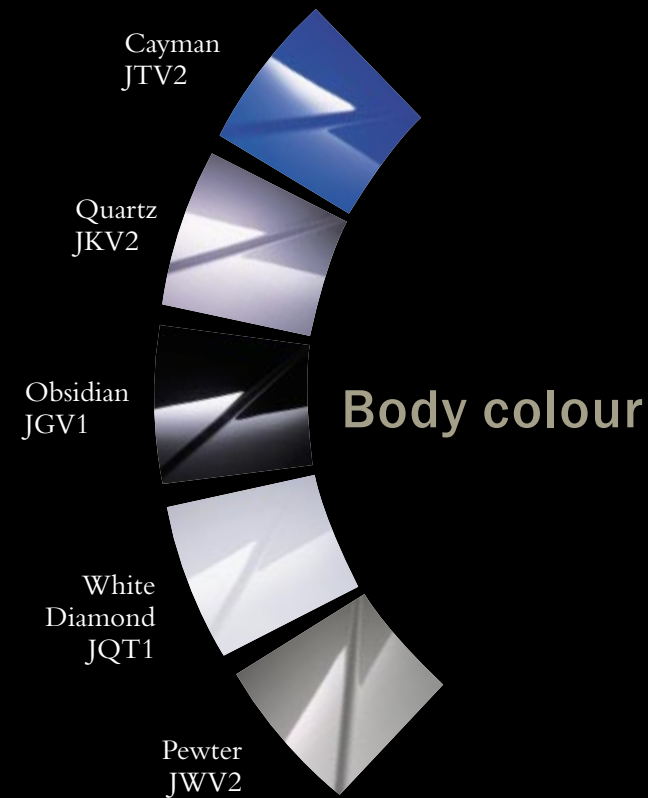
**Dimensions:**

Overall Length	mm	4580
Overall Width	mm	1725
Overall Height	mm	1340
Wheelbase	mm	2665
Track - Front / Rear	mm	1480 / 1470
Minimum Turning Circle	m	10.2

**Audio:**

Stereo CD Player	✓	✓
Speakers	4	4
Aerial - Built in Rear Window	✓	✓

	5 Speed Manual	4 Speed Automatic
<b>Instrumentation:</b>		
Speedometer, Tachometer, Electronic Odometer and Dual Tripmeters, Digital Clock, Fuel, Water Temperature & Oil Pressure Gauges	✓	✓
Separate Gauges for Voltmeter, Oil Temperature & Turbo Boost	✓	✓
Warning Lights for Airbag, Seatbelt, Park Brake, Brake System Failure, Alternator Charge, TCS, Oil Pressure, High Beam On, Door Ajar, Low Fuel	✓	✓
ABS Warning Light	✓	✓
Outside Temperature Gauge	✓	✓
Headlights-on & Key-in Warning Chime	✓	✓
Auto Transmission Indicator in Instrument Panel		✓
<b>Safety:</b>		
Driver SRS Airbag	✓	✓
Passenger SRS Airbag	✓	✓
ABS Anti-Lock Braking System	✓	✓
Brake Assist System	✓	✓
Disc Brakes Front & Rear	✓	✓
Transmission Shift Lock		✓
Seatbelt Warning Light	✓	✓
Front Seatbelt Pretensioners with Load Limiter	✓	✓
Driver's Window Interruption Detection	✓	✓
Highly Rigid Monocoque Body	✓	✓
Zone Body Construction, incorporating: Side Impact Door Beams and Impact Absorption Zones, Front & Rear	✓	✓
Impact Absorbing Steering Column	✓	✓
Fuel Tank Roll-Over Valve	✓	✓
Auto Lock Rear Seatbelts (AELR) for Child Safety Seat	✓	✓
Adjustable Front Headrests	✓	✓
Laminated Tinted Windscreen	✓	✓
Tinted Side & Rear Glass	✓	✓
Xenon / Halogen Headlights	✓	✓
High Mount Stop Light	✓	✓



These colours are indicative only.

Nissan New Zealand reserves the right to introduce changes to vehicle specifications on models contained in this brochure, at any time. Please contact your Nissan Skyline Dealer for further information or visit our website:

[www.nissanskyline.co.nz](http://www.nissanskyline.co.nz).

Printed December 2000

